



# COMMS COURIER



## In this issue:

### **New Fardux Database**

Streamlined order processing

### **More about MODBUS**

Find out more about one of our most used transmission protocols

### **Training Schools**

More about our recent training schools

### **New software version released**

Software version 3.0.8 has now been released for download

## Welcome

2009 has proven to be a challenging year in the oil and gas sector although we are pleased to report that our activity levels have remained strong with a number of new clients coming to the fore. There is a growing number of small and medium sized ventures starting up all over the world making their geographic position count against the back drop of the ever present global service providers.

Our clients old and new understand that the Fardux brand is recognized as one of consistent quality and technical innovation. Our support function remains high on our client's "important" list as well as our "solution provider" delivery making Fardux the one stop shop for the most data acquisition and process control service applications.

ISSUE 5  
December 2009

Tel: +44 (0) 1603 777980 | Web: [www.fardux.co.uk](http://www.fardux.co.uk) | Email: [fardux@wellwisegroup.com](mailto:fardux@wellwisegroup.com)

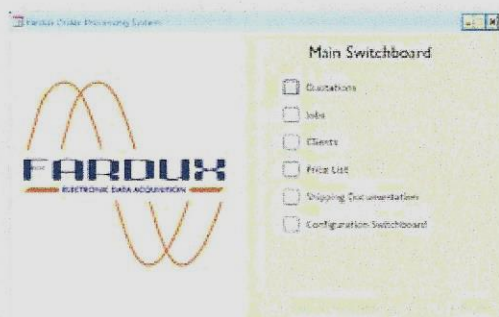


## New Fardux Order Processing Database

In order to make delivery to our customers more streamlined, Fardux have developed and introduced a new order processing database, which follows through from quotations, Sales order acknowledgements, delivery, customs and finally invoicing. (Internally known as FRED.)

It also logs terms and conditions of sale and Licence expiry dates. All documentation relating to each job is filed in one central location allowing easy access to all Fardux personnel, so job progress or any special customer requirements can be easily monitored.

All our paperwork is now auto generated and all quotations, SOA and shipping paperwork are e-mailed directly to our clients. In order for FRED to function correctly it is essential we have the correct information for your company recorded, so we would please request all our requisition, purchasing and invoicing contacts to please inform us of any changes to e-mails, telephone, fax numbers or personal changes etc.



## Daqlink Membership

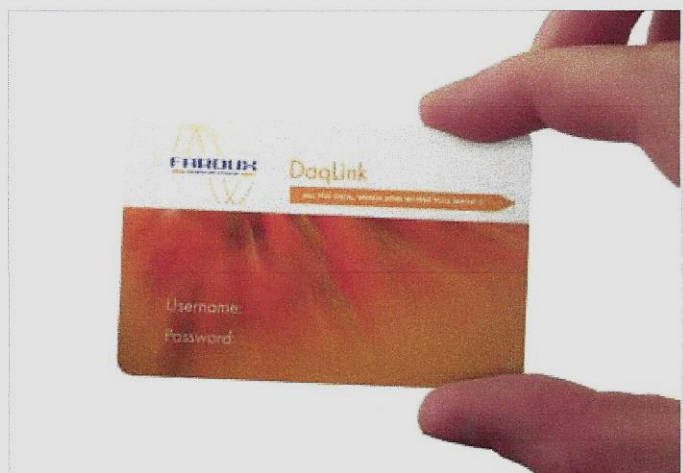
Many of you by now will have received your new Daqlink membership cards and we have noticed that you are beginning to take advantage of our new software download service.

We would like to encourage more of you to sign up for Daqlink membership... Don't miss out on the latest enhancements by not running the latest software version.

This service is totally free and becoming a member could not be easier, just send us an e-mail to [fardux@wellwisegroup.com](mailto:fardux@wellwisegroup.com) and put membership in the subject box.

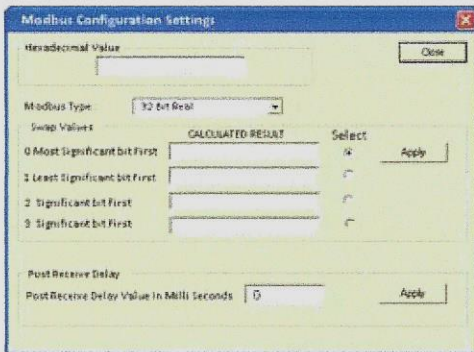
We will then send you an e-mail response with your username and password; we will also send you a membership card.

Lost your card or forgotten your password, don't worry, we have got it covered. Simply go to the website enter your e-mail address and we will send you your password by return e-mail. We are currently in the process of adding a data base of our most frequently requested technical bulletins available for download from our website.



# More about MODBUS

MODBUS continues to be one of our most used I/O transmission protocols although lack of acceptance and also understanding of the processes involved remains significant amongst field operators. We are constantly looking to find ways of delivering software functionality in the most straight forward, uncomplicated, and least cluttered way that we can.



The complication of the environment itself can not be made to go away, but we are able to shield operators from such complexities and technical terms by breaking things down to what is really important in the environment and only providing dialogues that are relevant and necessary.

The next release of software will incorporate the inclusion of a new dynamic dialogue (Fig.1).

Using this dialogue will remove the necessity to manually stop logging and to then to change the default settings when using MODBUS.

After auto recording the hexadecimal value from the External Device Status the dialogue above will then

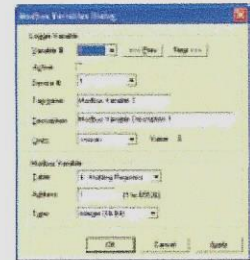
display the resultant real numbers in the four possible byte orders. All that the operator then has to do is select the known correct value and possibly set a poll delay value. This, much more straight forward dialogue, will mean that it is no longer necessary to edit the text "swap" file in the root of the programme.

It is still not plain English... but its hopefully not double Dutch anymore either!!

## MODBUS Transmission Types

The Fardux IDEA software can now accept MODBUS from the following transmission media

- RS232
- RS485
- TCP/IP



RS232 is a single device / slave option but the RS485 and TCP/IP have multiple device / slave address capability, also referred to as "multi-drop".

The dialogue above shows the Device # address has been added to facilitate multiple devices connected on a single line (Multi Drop).

## Software Version 3.0.8 now released

Software version 3.0.8 has now been released and is available for download from our website [www.fardux.co.uk](http://www.fardux.co.uk). Access to this software is only available to our Daqlink members, if you want to become a member email [fardux@wellwisegroup.com](mailto:fardux@wellwisegroup.com) and ask for a username and password, further information on this is available in this newsletter.

3.0.8 contains some exciting new enhancements:- 24 bit A-D card recognition, if you plug in our new 24 bit card the software automatically switches to display 24 bit values on the A1 pages.

Modbus 485 multidrop. Want to read Modbus data from more than one slave address, no problem our software can now read a total of 50 data variables from multiple slaves on a single Comms port. This functionality is only available as a dongle upgrade. Also a few minor bugs have been fixed. **continued...**



As usual full details of all the changes are included in the release notes. If you have an idea about how our software might be enhanced, please email us your suggestions. We keep a list of "possible" inclusions into the next software release and carefully consider any client proposals when we are deciding what's going to be in the build.

### 24 Bit A to D

Fardux have now released the new 24 bit A-D card; this was driven by customer's requirements to have better resolution when using 15,000 psi transducers and above. Accuracy and resolution are much improved for use with high quality sensors.

Built in to the new A-D card also is the ability to easily re-calibrate the card without the need for specialist external test equipment. In conjunction with this new card we can also offer a higher resolution Transducers to further improve pressure measurements...

In order to use and operate the new A-D card the logger will also require a new 24 channel Micro processor card update. New build loggers from the beginning of 2010 will be fitted as standard with both the new 24 Bit AD card and the generation three Microcontroller.

With this update the data from the 24 Bit card can be processed and sent to the host pc, where new software versions 3.0.8 and above can process the full 24 bit readings.

The new microprocessor card also has a new updated clock chip which eliminates the necessity to adjust the time function. This new microcontroller card will still read signals from our older version 16 bit A-D cards, and the software will automatically detect which type of A-D is fitted.

For further information on these products and pricing please contact us at [fardux@wellwisegroup.com](mailto:fardux@wellwisegroup.com).

Card, Micro Controller **FDX/MIC/003**  
Card, A to D 24 Bit **FDX/AD/003**



New 24 Bit Micro Processor card.  
**(FDX/MIC/003)**



24 Bit A-D Card **(FDX/AD/003)**

# Training Schools

We recently conducted three training schools for our new clients in Kuwait, India and Nigeria; we would like to thank all parties involved for the wonderful hospitality shown to our instructors during their stay.

For most of 20 years now Fardux has provided training courses on our product range in all corners of the oilfield world at our clients' facilities. In recent years, we have added a scheduled list of training offerings from our UK facility near Norwich, England.

Training is often one of the first areas to take a hit when activity levels are lower and we have certainly seen this with regard to our in-house training courses this year. On the flip side of that coin we have at the same time seen an increase in training activity at client locations. Both in-house and external training deliveries are, we feel, important to maintain since they offer increased options for our client community.

## In-house Training

Provides the ability for us to take one or two students from a particular area or company and combine them with other students from different areas or companies and still fulfil individual and company regional training objectives.

The minimum number of students that we have to enrol to make these schools viable is set at five attendees. If we have not achieved the required level within two weeks of the course commencement we reluctantly have to, on occasions, cancel. Your continued support in this area is appreciated and will enable us to provide this facility year in year out. This delivery is charged on a "per seat" basis.



## External Training

When a client has sufficient numbers to make up their own school, in country, we will send out an instructor to you. This represents a more cost effective way to operate when there are student numbers between five and a maximum of twelve. This delivery is charged per day of the instructor's time regardless of the number of students (maximum twelve).

Training is all important as far as we are concerned and within this technical arena, the delivery should be from an official Fardux trainer with the benefit of the history of why things are the way they are and the up to date knowledge of the latest enhancements to both Hardware and Software products.

Data gathering, reporting and distribution is core to our application environments and for these reasons in particular, training is critical to maintain the correct level of field competence and to keep your service quality record where you want it to be!!



From left to right:-Raj, Jonathan and Shankar from Tetra Technologies India.



From left to right: Mounir, Smain, Halim and Raid from GDMC Kuwait



Left to Right: Ike, Henry, Martins, Joel and Bakare from AFTRAC Nigeria.



### What is your current location and position?

Current location is Oman; position is Metering & Instrumentation – Manager. Working for MB Petroleum.

### What are your main job functions?

To run the new Metering & Instrumentation Department within MB Petroleum for all the different sections related to Welltesting, wire line, coiled tubing and any other facet of the companies operations which utilise any equipment which records, gathers or deals with data. Be that a Full DAS system, Gauges, Pumping or communications.

### What is your background (job history)?

Started in I.T. on ICL and IBM mainframes in the Civil Engineering Industry straight from completing my Diploma, until I took a sabbatical some 9 years later. (Sailed around the world).

Upon my return to the UK I was approached to see if I was interested in a job working for DAS operations within Halliburton. I accepted the offer and went on to work with Halliburton for just over 10 years.

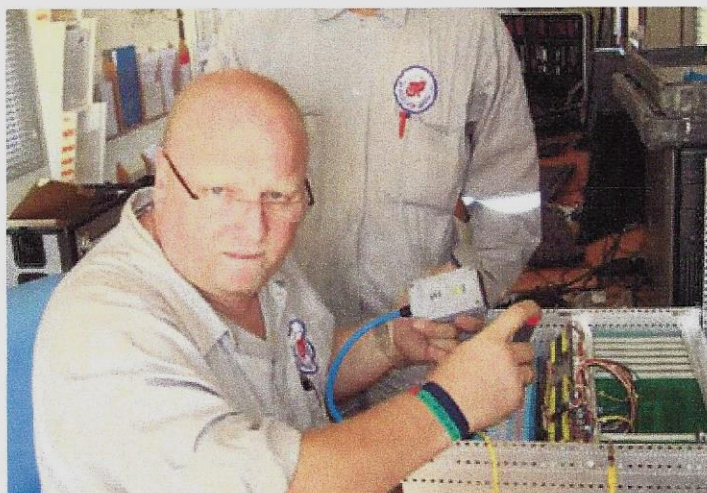
I then wanted a change, so took up a position for nearly 5 years in the Production Industry during which I helped commission and operate the FPSO the Bleo Holm off Aberdeen.

I realised I missed the challenge and excitement of the Welltesting environment, so returned to working with Halliburton as Senior DAS Supervisor in Kazakhstan. This lasted until the contract expired when I decided to look around for another focus.

This arrived in the shape of MB Petroleum in Oman, who outlined their vision for a new department to handle anything and everything to do with metering, measurement, and DAS, with some I.T. on the side, and have it all looked after by one department, under my leadership.

This role I took on with relish and we have, as department just completed our first year, during

## A Day in the life of a Metering & Instrumentation Manager – Mark Satchell



which time we have made large strides towards a unified and professional approach for dealing with all, and any problems, that come our way. I have an excellent team working along with me and backing me up, and our aim from day one has been to bring proficiency and joint co-operation across all operations.

### What aspects of your job do you find challenging?

Every day is a challenge, just in differing ways. From issue's in the field, to being PC in the office, (which is a new skill to learn after being used to the field) but it keeps you on edge, and alive, and exercises the old grey matter.

### How are the Fardux data acquisition products used in your area?

We have recently completed site integration tests with 4 different permanent downhole gauge suppliers (all at the same time) whilst providing the sole interface and data distribution between these downhole gauges and the MIDAS package, which is then used as the handoff hub to the frac team and the customer. All being done in real-time, with WITS and MODBUS and utilising Client stations for the distribution of all information. **continued...**



**continued...**

We have just ordered a second exact duplication of the first package as per the request from our client, who was very impressed with the system and its data handling capabilities.

Our other operations worldwide with MB also utilise mostly Fardux equipment, for the simple fact it does what is say's on the box, and is reliable. I like the fact if we get any issue's or need advise, we can virtually call someone 24/7 (and the Illustrious Engineering Department, come to our rescue).

We use the Fardux Sandsnoop systems on our Sand Management Systems, and we use the Fardux 12 and 24 channel loggers and all associated equipment, for Well Testing operations all over the Persian Gulf regions.

Having known and worked with the Fardux team now for almost as long as they have been in existence, we have developed a very good working relationship over the years.

**What locations have you visited recently?**

With my current role, I am based in the Head Office in Muscat, Oman, so field trips to the interior are a regular occurrence, but I have visits planned in the coming 12 months for our other operations in the region, and elsewhere MB operates.

**Was there a highlight or lowlight?**

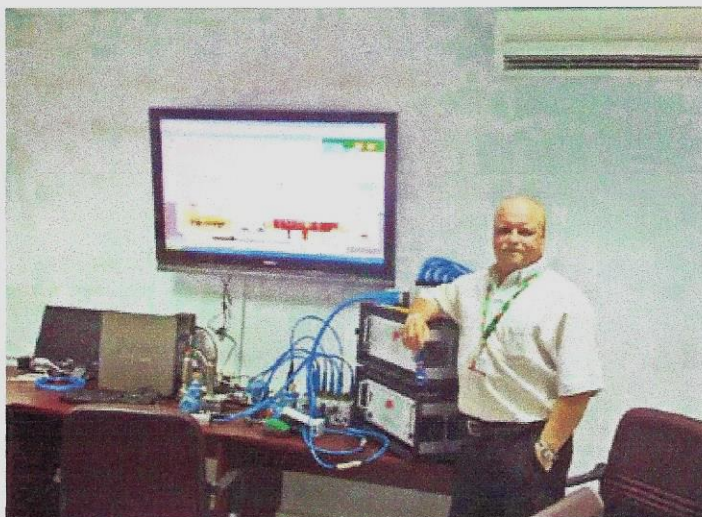
Every day there can be both. The trick is to try and keep everything on an even keel.

**What location would you like to travel/work in?**

Right now I am concentrating all of my efforts into MB Oman, but it would be nice eventually to hand over the reins here to one of my local Senior Supervisors to carry on, whilst I take up the challenge of doing the same again at another MB location somewhere else in the world....I have heard Australia and New Zealand can be quite nice.

**What are your Hobbies?**

Cooking, Scuba (PADI), Movies, Music, Quad biking and Travel. Learning Arabic, both written, and spoken (as I have a very good teacher).



# 2010 Training Dates Released

UK training course schedule 2010. To view full course details or to reserve a place, visit [www.fardux.co.uk](http://www.fardux.co.uk).

	JAN	FEB	MAR	APR	MAY	JUN	JUL	AUG	SEP	OCT	NOV	DEC
<b>Fardux operator basic</b>		8th - 12th			17th - 21st			9th - 13th			8th - 12th	
<b>Fardux operator advanced</b>				19th - 23rd						11th - 15th		
<b>Fardux technicians school</b>			15th - 19th						13th - 17th			