

Fardux

# Airwave Lite Software Package

Bringing clarity to complex data collection

Fardux prides itself on providing a solution for a broad spectrum of operations. Our Airwave Lite software offering, along with its associated WirelessHART hardware system is a proven, comprehensive solution for data acquisition and visualisation that can be tailor-made to suit your needs.

## OVERVIEW

Fardux software has always been central to our success in the data acquisition and process control market. Our software has always been HMI intuitive, logical and particularly easy to understand; this is just one of the reasons our clients come back to us time and time again.

The software has been designed as a core product framed initially by the selection of one of a number of USB security dongles, in this case the Airwave Lite version.

The Airwave Lite package can then be further honed in to your requirement to include a large range of selectable bolt on functions, which we call features. The selection of these additional features defines the functionality of exactly what the application code delivers.

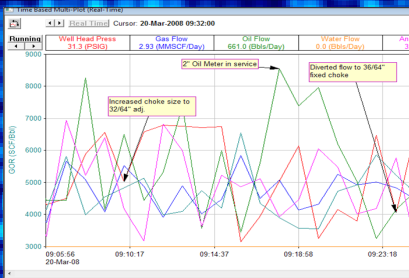
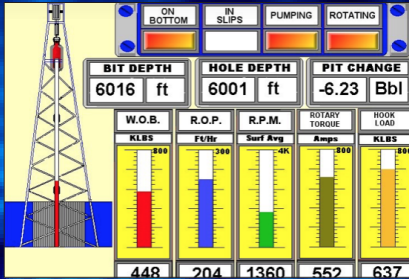
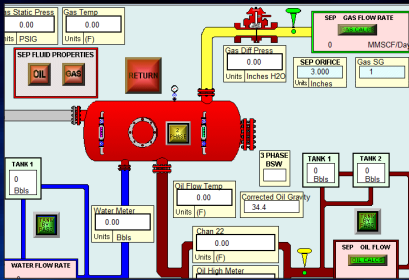
This software package is compatible with Fardux's wireless Airwave Logger only, and communicates with the hardware via MODBUS over a TCP/IP CAT 5 cable connection.

As always with Fardux products, we set out to get the job done with the minimum amount of complexity and maximum logical clarity. This basic principle hasn't changed since 1990 and is still as important now as it was back then.

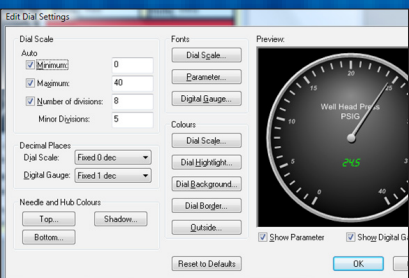
Fardux software is recognised as a function rich, easy to understand application, fully supported and maintained through Fardux licensed technical support and maintenance programmes. Training courses on Fardux products are also available, and include in depth learning of software features and application linked functionality.

## KEY BENEFITS

- **Easy to follow installation software.**
- **Zoom Function.** Unlimited highlighting to produce the finest detail.
- **Full Windown functionality.** Including browse, cascade, tile, print preview etc.
- **Auto scaling of all plots** as well as manual scaling override.
- **Calibration of all logged analogue channels** via ten point matrix
- **Screen application schematics.** Engineering data pasted to appropriate positions.
- **CSV data export.** Importable into commercially available spreadsheet software.
- **Choice of engineering units.**
- **Full icon-driven functions.** Comprehensive tool bar and status bar control.
- **Real-time plot analysis.** Cursor gratitule historical information selector.
- **Alarm level set points.** Internal and external.
- **Sequence of events.** Event log filter for manual and automatic entries.
- **Self controlled programme suite.** Plots and reports can be viewed from within the application environment.



No	Description	Value	No	Description	Value
31	OLT-007 PV	66.728	46	Channel 10 - PV	61.898
32	OLT-007 Signal	135.000	47	Modbus Variable 47	0.000
33	OLT-007 Battery	10.547	48	Modbus Variable 48	0.000
34	OLT-007 PV Status	OK	49	Channel 10 - Status	No value
35	OLT-007 Adapter Status	OK	50	Modbus Variable 50	No value
36	Modbus Variable 36	0.000	51	Channel 11 - PV	61.885
37	Modbus Variable 37	0.000	52	Modbus Variable 52	0.000
38	Modbus Variable 38	0.000	53	Modbus Variable 53	0.000
39	Modbus Variable 39	No value	54	Channel 11 - Status	No value
40	Modbus Variable 40	No value	55	Modbus Variable 55	No value
41	Modbus Variable 41	0.000	56	Modbus Variable 56	0.000
42	Modbus Variable 42	0.000	57	Modbus Variable 57	0.000
43	Modbus Variable 43	0.000	58	Modbus Variable 58	0.000
44	Modbus Variable 44	No value	59	Modbus Variable 59	No value
45	Modbus Variable 45	No value	60	Modbus Variable 60	No value



ALL THE DATA, WHEN AND WHERE YOU WANT IT

## LITE PACKAGE FEATURES

Features are controlled by HASP dongle programming which can be changed by uploading a V2C file sent by email. In this manner, what might start off as a relatively simple software package can be enhanced by adding 'bolt-on' features as and when they are required. Of course if these additional features are not required, then the product's entry costs are reduced.

This approach allows Fardux to enable software features in accordance with a clients specific requirement and also in keeping with any budgetary restrictions ensuring spend is totally aligned with required functionality. Software platforms include stand alone server; network client; web client; web server and web based browser.

The software installation for all of the Fardux Data Logger hardware product is the same application code. Differences between one software application and another, and a wide range of functionality within any given product, are feature controlled by the way the security dongle is programmed.

The following table shows features that are available as standard with the Airwave Lite Package, as well as those that are available as additional 'bolt-on' features.

	Standard Airwave Lite Package*	Available as Bolt-on Feature
30 Channels	✓	
50 Channels		✓
Auto Channel Configuration	✓	
Separator Configuration Single Vessel	✓	
Internal alarms	✓	
Gas setup	✓	
Oil Setup	✓	
Water setup	✓	
Log to disk	✓	
Special Values	✓	
Calculation control	✓	
Operator message	✓	
Units setup	✓	
Cascade	✓	
Tile horizontal	✓	
Tile vertical	✓	
Standard channel number	✓	
Channel enhancement	✓	
Single separator	✓	
Multi Separator		✓
Plot Against Depth		✓
Dual Channel Plots	✓	
Multi Channel Plots		✓
Standard Reports	✓	
Custom Reports	✓	
MODBUS Master Single Port		✓
MODBUS Master Multiport		✓
MODBUS Slave Single Port		✓
MODBUS Slave Multiport		✓
MODBUS 4 Master/Slave Combo		✓
MODBUS Multi Drop Master Single		✓
WITS		✓
WITS Realtime		✓
Bulk Import		✓
Surface Drilling Fluids		✓
ASCII		✓
Macro		✓

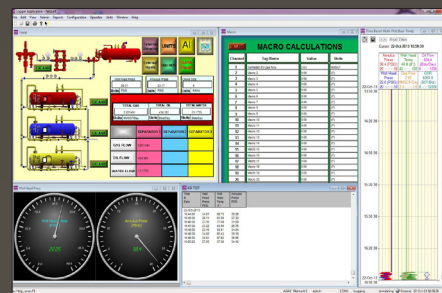
\*Final product features should be confirmed at point of sale.

# Fardux

## WHY FARDUX?

We have always believed that the supply of our oil and gas data acquisition products and solutions is just the beginning of our relationship with our customers.

We endeavour to provide support from the moment the decision is made to purchase any product, and then throughout the product's lifecycle. We always work hard to ensure our customers are provided with the best solutions, support and advice.



## All the data, when and where you want it

### HEAD OFFICE

Crossways Business Centre,  
Stalham Road,  
Hoveton,  
Norwich,  
UK,  
NR12 8DJ  
Tel: +44 (0)1603 777980  
Email: [sales@fardux.co.uk](mailto:sales@fardux.co.uk)  
Web: [www.fardux.co.uk](http://www.fardux.co.uk)

### UAE OFFICE

Building 7WA  
Office 1031  
PO Box 293815,  
DAFZA  
Dubai,  
UAE  
Tel: +971 (4) 2555003  
Email: [sales@fardux.ae](mailto:sales@fardux.ae)  
Web: [www.fardux.ae](http://www.fardux.ae)