



Fardux

INNOVATION, QUALITY AND SUPPORT

At Fardux the technology journey never stops. We are constantly striving to deliver fit for purpose solutions to solve our clients data acquisition and process control requirements.

From November 2014 we are rolling out our Cube data logger. Cube is a hybrid wirelessHART / Wired HART product that offers the best of both worlds in a single enclosure. This added to our Airwave wirelessHART Gateway and our Wired Data Loggers IDEA Lite and IDEA Enterprise makes up a formidable range of technical data logging solutions. Our FieldView technology has begun to

"FOR MANY OF OUR CLIENTS WE ARE A TRUSTED PARTNER THAT WILL ENSURE THAT THE CORRECT TECHNICAL DIRECTION DECISIONS ARE MADE."

introduce us to some new application environments and along with that new technical challenges. We are currently involved in a re-gasification project in

South America where part of our provision is subsea electro/hydraulic umbilicals and subsea transducers. We have also seen an increase in pipeline and pigging projects which very often also involve video surveillance systems, perimeter intruder detection systems (PIDS) and access control systems (ACS). The scope of our engineering capabilities may have widened but the core of what we have been doing for a quarter of a century remains unchanged - hardware, firmware and software.

In recent years we have developed a balance between product delivery and engineered specific design projects. All of this is healthy for Fardux as the technology employed in each market segment works hand in hand with others in a symbiotic harmony.

Technology companies are many and plentiful of course but what has always separated Fardux from the others is our field application knowledge, and our attention to quality and detail. We always try to be a one stop shop for our clients so that they can rest assured that the whole project environment is covered without any gaps in the required provision.

[CONTINUED ON PAGE 2...](#)

CONTENTS

- 2 HYBRID LOGGER LAUNCHED
- 2 ADIPEC EXHIBITION SUCCESS
- 2 PHOTO OF THE MONTH
- 3 AIRWAVE FOR WELL SERVICES
- 3 FARDUX TRAINING SCHOOLS
- 3 ADVANTAGE OF HASP DONGLES
- 4 ONLINE DAQ WEB TRAINING
- 4 FARDUX NEWS
- 4 MERRY CHRISTMAS

CONTACT US



UK OFFICE
+44 (0) 1603 777980
FARDUX@WELLWISEGROUP.COM



UAE OFFICE
00 (971) (4) 2555003
SALES@FARDUX.AE

...CONTINUED FROM PAGE 1

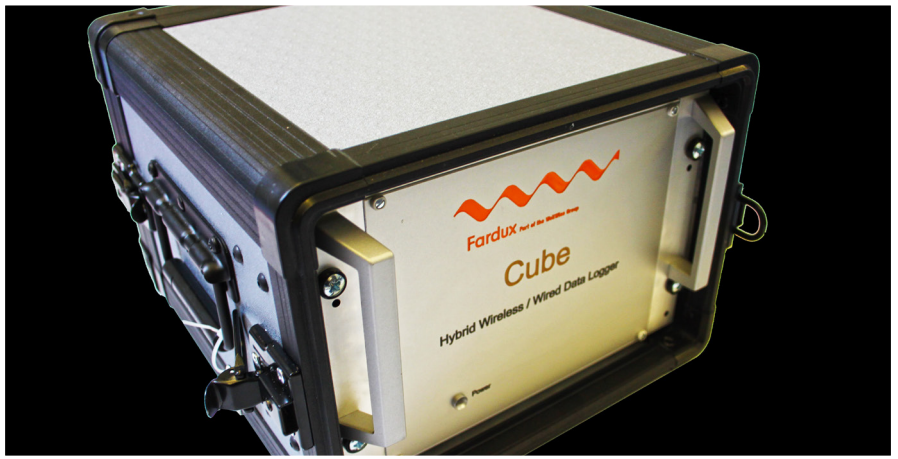
...Available technology becomes greater and greater with each passing month. For many of our clients we are a trusted partner that will ensure that the correct technical direction decisions are made. We ensure that where new innovation is required, it is delivered, and where something that's been around for decades, it won't be overlooked purely on the basis of technology for technology sake. 'Fit for purpose': it's the way to go.

With some downward pressure on oil prices in recent weeks, the necessity to work smarter becomes even more important. The age of the digital oilfield is well and truly with us in some geo-markets, and has some way to go in others. As the technology becomes trusted the roll out of electronic and software solutions for SCADA continues to pick up at a pace.

The common theme here is trust. Too many technology companies sell product and then back away when it comes to support and field commissioning. At Fardux we stand by what we sell and what we service as a partner and not just another commodity vendor.

This Comms Courier will be the last issue for 2014. We wish all of our clients the best of the festive season and happy holidays.

DAVID MASON, MANAGING DIRECTOR.



HYBRID LOGGER LAUNCHED

FARDUX CUBE WIRED/WIRELESS HYBRID LOGGER

Fardux prides itself on providing a solution for every operation. Our new Cube Hybrid Data Logger, along with its associated software system is a comprehensive solution to oilfield data acquisition and management, that can be tailor made to suit your needs. Whether it's a wired or wireless system that is required, The Cube Hybrid is the solution.

In today's choice driven market, we at Fardux know how important it is to have options available for discerning clients, out of the box and ready to go. We recognised that different markets require different solutions, according to technical challenges and commercial sensitivities, and for this reason we have developed our most versatile data logger to date.

Fardux have always been well known for the high-level technical products and solutions that we offer, and the Cube Hybrid is no different, combining the best of both wired reliability with wireless remote connectivity. Our wireless gateway technology, Airwave, is now well established. Airwave subscribes to WirelessHART protocols, and the content rich information from the transducer that this delivers. The embedded firmware is browser accessible and programmed on a single

board computer running Linux on an ARM processor. Power consumption and footprint are small, affording economies of space saving and power requirement reduction.

The wired side of the Cube is facilitated by 4 to 20 mA inputs, via a single safety barrier which is able to accommodate up to eight channels of auto-detected inputs (either analogue or pulse) and a collector. Output is via MODBUS to the host PC.

The Cube software is a feature controlled application, allowing our clients further choices when it comes to selecting functionality. The cube application software has been specifically designed to compute both wireless and wired inputs via either TCP/IP Ethernet or MODBUS, riding on RS485 simultaneously without restriction on input channel control.

The time tried and tested Fardux software functionality, as well as look and feel are very much in evidence with the Cube Hybrid. At the same time, new and exciting interfaces have been employed to deliver alternate innovative solutions to data logging.

If you are interested in the Cube Hybrid and would like to find out more information on the product, please contact Fardux using the details on the last page of this newsletter.

ADIPEC EXHIBITION SUCCESS

The Fardux team had the pleasure of exhibiting at ADIPEC from the 10th to the 13th November, in Abu Dhabi, UAE. This is the third time we've exhibited, and yet again, the show did not disappoint. As with all the shows we take part in, we like the direct interaction with our clients, and our aims are to showcase some of the new technologies we have developed in the past year. Our FieldView well monitoring and visualization system sparked a lot of interest with visitors of the show. The system allows remote monitoring of wells, pipelines, early

FARDUX EXPO SCHEDULE 2015:

MEOS: Bahrain
8th-11th March (Booth 237)

OTC: Houston
4th-7th May (Booth 3566)

production facilities either land based or off-shore. This can save valuable resources and time. If you happened to speak to us at the show, and we have not already contacted you, please feel free to contact us with your specific requirements ASAP, thanks!

PHOTO OF THE MONTH!



Thanks to Bernie Murphy! To enter, email your photos to:
info@wellwisegroup.com

FARDUX TRAINING SCHOOLS

Training remains an important part of the Fardux services delivery, and ensures success for our clients when it comes to operating in the field.

Fardux offers training in accordance with published schedules on our websites in both the UK and the UAE. In addition to this we have always provided training for clients at their premises to maximize training numbers and minimise costs. Fardux's next scheduled course is our IDEA operator basic training, which is set to be held at our UK offices from the 3rd to the 7th of November 2014.

For more information on our training schools, and how you can book for either yourself or your employees, please visit our website, or contact Fardux using the details on the final page of this newsletter.



AIRWAVE FOR WELL SERVICES



The Fardux well services gateway - AirWave, was developed specifically for the oil and gas industry. With the advent of wireless systems, several protocols have emerged. Most of the world's instrumentation manufacturers have subscribed to the HART or WirelessHART protocol. So we adopted the same protocol for our gateway. This means we are able to supply transducers from a variety of recognised companies ensuring not only accuracy, resolution and stability but cross platform compatibility. Our AirWave gateway is both compact and rugged. It's ideal for applications such as Well Testing, Fluid Pumping, Coiled Tubing and even Underbalanced Drilling. It has a standard capacity for 30 devices connected simultaneously which can be expanded. The job of the AirWave is much more complex than that of a network router or switch. It manages security and connectivity and exports data in a format that is compatible with our world renowned software package - IDEA.

System reliability is ensured by the use of mesh technology network. In essence it's a 'self-building, self-healing' communications link with redundant pathways that adapt to the changes in the local signal environment.

If you have existing transducers that are HART compatible, these can be converted to wireless instruments by the means of an adaptor. This cross compatibility ensures data quality is not compromised; in addition data from each individual sensor can be transmitted at pre-defined intervals. The Fardux well services gateway can be provided for both safe and hazardous areas (Zone 1 and Zone2) Hazardous and safe area antennae are also available with the standard antennae having a range from the gateway of +/- 250 meters line-of-sight. This is ample coverage for most well service jobs.

So whether is a new deployment or an upgrade from existing instrumentation the Fardux AirWave delivers a reliable means to manage wireless field data.

REALISE THE ADVANTAGES OF HASP DONGLES

LICENSE UPDATES VIA FILE DOWNLOAD TO SAVE YOU TIME AND MONEY

Many of you are already using HASP dongles and have already realised the benefit of using the V2c file delivery to upgrade you licenses in the field.

Before we moved to the HASP keys whenever your current licence expired we had to send by courier a new set of dongles to you head office, once these were received by yourselves you then had the logistical task of delivering the new dongles to the field.

By moving to HASP dongles we have removed the need to ship new keys, when the license is renewed we simply send you an e-mail with a V2c file attached. This e-mail can then simply be forwarded to the field. The operators can then follow our step by step instructions to upgrade the Dongle. There are additional benefits of using HASP dongles that you may not yet know about. Fardux have introduced the software feature option which enables you to tailor you

dongles to suit you exacting requirements.

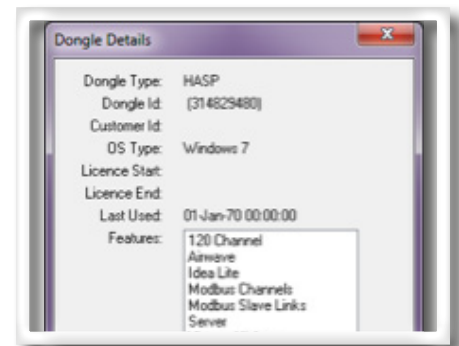
If you currently have dual trace plots and trends you can purchase the multi plot 6 trace feature.

If you only have one Modbus input but want to read from 2 devices, then our 4 port Modbus master feature will offer you the optimum solution, or you could consider the Modbus 485 multidrop option.

Some of the features available are:

- Multiplots
- Modbus Slave
- Bulk import/WITS real time
- ASCII
- Macros
- 30 channel wireless to 50 channel.

All of these features are available for all versions of software including our new Wireless software offering.



If you want to purchase a feature bundle then this is subject to a discount, once the feature are purchased they are automatically included in the next license renewal no additional charges are levied.

For details of all our software products visit our website at www.fardux.co.uk or contact us at sales@fardux.co.uk to discuss the features currently available to you.

ONLINE SCADA WEB TRAINING FROM FARDUX

NEW DATA ACQUISITION MODULES NOW AVAILABLE: CONTACT US TO ENROLL

Many of you will know that the parent company of Fardux is Wellwise Oilfield Services. As part of the online training offerings provided from our website www.wellwisegroup.com, we have included a Data Acquisition module.

The core functionality is centred around the candidate reading a technical script in relation to a portion of the core subject. After this the candidate enters into an online timed test with randomly generated questions. Candidates are given three attempts to achieve a pass mark before being locked out of the system for a period of three months when the test can then be repeated. Within the discipline there are ten levels of attainment from trainee to supervisor.

Training makes up an important part of everyone's competency portfolio and is another piece in the jigsaw that makes up the bigger picture which our clients are increasingly looking to see delivered. During Fardux training schools the online web application is used to test and assess students while contracting data acquisition engineers can be assessed with regard to their skill and knowledge levels as a complimentary part of their overall competency.

Training Completion Summary

Candidate Name: Bill1 Heslop1
Active Discipline: Data acquisition
Working Towards Level: BASIC
Enrolled To Level: BASIC

Progress: 6%

Key

- Complete
- Active
- Not enrolled
- Outstanding
- Locked out

Units

<input checked="" type="checkbox"/> Introduction	<input checked="" type="checkbox"/> Starting The IDEA Software	<input type="checkbox"/> Topology	<input type="checkbox"/> Channel Configuration
<input type="checkbox"/> Flow Configuration	<input type="checkbox"/> Logging To Disc	<input type="checkbox"/> Simulating	<input type="checkbox"/> Events
<input type="checkbox"/> Plots & Indicators	<input type="checkbox"/> Reports	<input type="checkbox"/> Users	<input type="checkbox"/> Schematics Editor
<input type="checkbox"/> Testing The Logger	<input type="checkbox"/> Units	<input type="checkbox"/> Channel Calibration	<input type="checkbox"/> Report Editor
<input type="checkbox"/> Test Boxes	<input type="checkbox"/> Win 7 & 8	<input type="checkbox"/> Hardware 1	<input type="checkbox"/> Hardware 2

Disciplines

- Data acquisition

Our web based competency portfolio's, which we have in eight service activity disciplines, represent a known level of discipline and environment knowledge although its very often not apparent when comparing one candidate with the next at which particular level of skill attainment any

given candidate may have reached. Because the Online web training modules have ten levels, technical attainment levels can be added to the overall competency portfolio to provide additional differentiation between engineers.

FARDUX WEDDING!

Congratulations to Mohammed Mirajuddin, Fardux's Electronics Technician in Dubai, who married his wife Heena last month!



MERRY CHRISTMAS

Wishing you a Merry Christmas and happy 2015! Fardux are still contactable throughout the Christmas period on our office numbers (see below) if you have any issues or queries. If you have any material that you want us to put in our next Comms Courier, please email: michael.mason@wellwisegroup.com with your stories. The next issue of Toolbox talk will be released in the first quarter of 2015.

CONTACT US



UK OFFICE
+44 (0) 1603 777980
FARDUX@WELLWISEGROUP.COM



UAE OFFICE
00 (971) (4) 2555003
SALES@FARDUX.AE

