



Fardux

# FieldView

*Flexibility, visibility, control*

Fardux FieldView is a real-time monitoring and control system software package that works seamlessly with our hardware providing a comprehensive solution to field data management. Whether it's from a single well, refinery, pipeline or multiple fields, we provide all the data when and where you want it.

## OVERVIEW

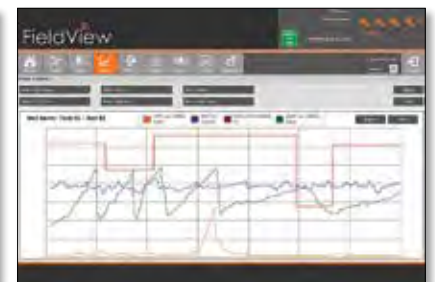
Robust field sensors provide pressure, temperature, flow data and more via our secure gateway. Our configurable software brings all these elements together, providing operators the capability to be more productive, make better decisions, and extract maximum value from their oil and gas assets.

Data is the key and as an industry leader in Surface Data Acquisition, FieldView has been developed with complete flexibility in mind. Capturing data directly from single or multiple sensors, FieldView provides users with a range of ways to display both current and historical data.

The system is run by our proprietary control software and configurable modules. These modules include a DataCapture Remote Terminal Unit (RTU) and Output Switching Box (OSB) which can be tailored to meet user-specific automation needs.

Alarm conditions can be managed from the dashboard, meaning wells can be remotely closed as soon as pre-set parameters are exceeded. Assigned users are immediately alerted, providing safe and efficient centralised control. The result is optimisation of productivity in both new and existing fields while reducing capital and operational expenditures.

FieldView can be accessed from any Internet-connected PC or laptop, as well as on the move by using the purpose designed SmartPhone app, giving complete flexibility, visibility and control for anyone who needs it, wherever they may be.



## A NEW WAY OF WORKING

FieldView opens up a whole new way of working. Our unique software and control solution encompasses our robust DataCapture RTU which enables you to monitor, diagnose and maintain your utility assets – even in the most hazardous environments.

In addition, you can leverage the capabilities of our OSB functional safety system, which delivers reliable control and safety on a common platform. It's a great example of how Fardux works closely with our customers to understand their needs and deliver products and services that enable them to work smarter and more productively.

**Put simply, Fardux FieldView is a safe, cost effective and proactive approach to data management.**

ALL THE DATA, WHEN AND WHERE YOU WANT IT

# FieldView

Using Field View, production engineers and other users can remotely and securely monitor and manage virtually any number of wellheads, from any Internet connected PC, tablet or Smartphone.

## KEY BENEFITS

- **Reduce costs.** Deploy field staff more efficiently and effectively by virtually removing the need for routine onsite inspections and wellhead closure.
- **Improve productivity.** Respond more quickly to wellhead issues with regular status updates and ability to remotely close-off wellheads.
- **Increase safety.** Reduce unnecessary exposure of staff to hazardous areas through remote monitoring and wellhead management, e.g. valve closures.
- **Enhance performance.** Utilise Field View to visualise performance trends and drill down into detail to see the bigger picture.

## KEY FEATURES

- **Real-time data acquisition.** Data collected from a single or multiple sensors per wellhead (i.e. temperature, pressure, flow rate). Generate real-time reports.
- **Flexible management.** System administrator can add/remove users, assign wells and fields, manage access levels and log-in details.
- **User customisation.** Configurable pages to display multiple wells and fields in a way that suits the user, enabling a customisable dashboard to be set up and saved.
- **Intuitive user interface.** Easy to use with minimum training required.
- **End-to-end solution.** Supported by Fardux's cable-based and wireless field sensor data acquisition products to deliver a fully integrated solution.

## MAIN FUNCTIONS

- **Field/well view.** Top level visibility of fields and wells and their current status with drill-down to view individual sensors' real-time and historic measurements, manage sensor values, create alarms, etc.
- **Map view.** Global map showing location and status of wells, together with ability to click to view the well schematic and latest sensor data. Pan, zoom and filter to get the detail required.
- **Chart view.** Displays current and historical well data in graphical chart views including option for averaging data across selected wells. Select sensor values, data frequency, timespan and filters to display, print and export charts required.
- **Table filter.** Similar to Chart View above but displays data in tabular format giving actual values.
- **Event view.** Displays events occurring when pre-set parameters have been exceeded including date and time, event level, status and event details.
- **Alarm view.** Displays active alarms and enables individual alarms to be set up and managed including ability to pre-set a mobile telephone number and text message for each of four variable states (Hi Hi, Hi, Lo, Lo Lo) to automatically alert field staff.
- **Operator Log.** Automatically records operator entries in the form of a sequence of operations and provides historical traceability of events.
- **Settings.** Administration screen enabling a variety of functions to be carried out including managing users, adding and managing fields and wells, uploading wellhead schematics, etc.

## Fardux

### WHY FARDUX?

We have always believed that the supply of our oil and gas data acquisition products and solutions is just the beginning of our relationship with our customers.

We endeavour to provide support from the moment the decision is made to purchase any product, and then throughout the product's lifecycle. We always work hard to ensure our customers are provided with the best solutions, support and advice.



*All the data, when and where you want it*

### HEAD OFFICE

Crossways Business Centre,  
Stalham Road,  
Hoveton,  
Norwich,  
UK,  
NR12 8DJ  
Tel: +44 (0)1603 777980  
Email: sales@fardux.co.uk  
Web: www.fardux.co.uk

### UAE OFFICE

Office E-7 (DAFZA),  
PO Box 293815,  
Dubai,  
UAE  
Tel: +971 (4) 2555003  
Email: sales@fardux.ae  
Web: www.fardux.ae