



# OLSB

## Output Logic Switch Box

Compatible with the IDEA Enterprise Software suite, the OLSB provides the ability to produce a digital output to control external devices. The OLSB has 16 internal switch/relays capable of digitally controlling up to 16 external devices

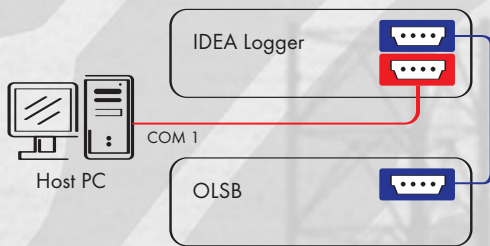
The host PC serial transmission contains information in relation to the OLSB output status which is ignored by the microcontroller in the Data Logger and is processed by the OLSB to produce a status change on the connected device.

When connected to an electro hydraulic interface valve the OLSB can control shut downs to close Surface Safety Valves or SCSSV's.



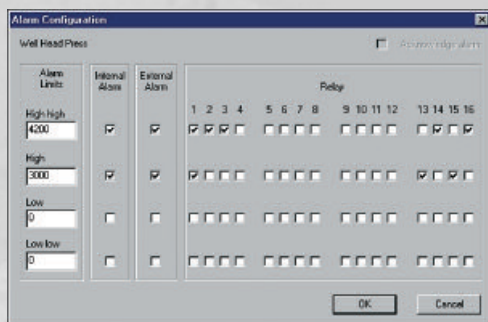
# OLSB

## Output Logic Switch Box



Output conditions can be easily programmed from within the IDEA Enterprise software to produce an array of outputs in the range of LoLo, Lo, Hi and HiHi.. Preset conditions for output can be either transducer analogue inputs or produced data base parameters such as fluid flow rate thresholds or derived macro calculated parameters.

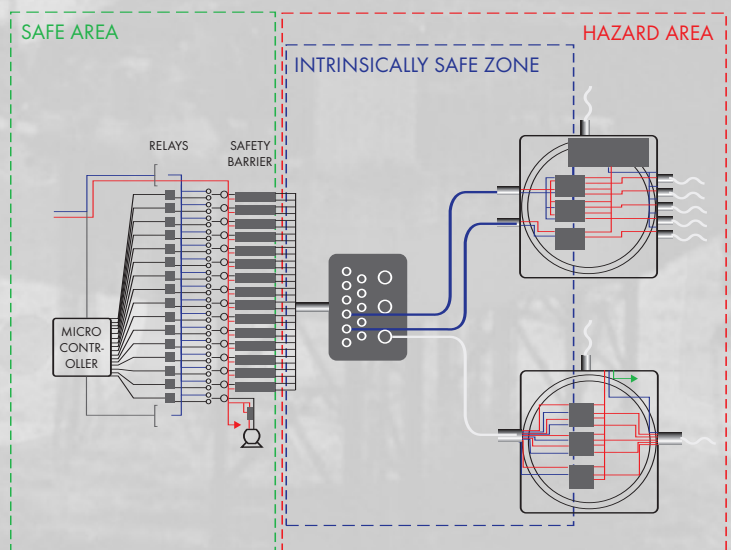
24 volt signals from the OLSB can be controlled by either normally open or normally closed contact relays to apply or withdraw voltage from an external device . External devices can be either intrinsically safe or Exd according to the type and configuration of the safety barriers used.



### Typical OLSB Cause listing

High Pressure	Fusible Loop (Fire Detection)
Low Pressure	High Level
High Flow Rate	Low Level
Low Flow Rate	ESD Button (Status Change)

Contact switch /Relay status changes can "Effect" or digitally control any number of connected devices, ie. Pumps, firewater deluge systems, fuel line isolation, sounders, beacons and shutdowns.



24v Control Loop Circuit